

UDC 656.212.5:[004.434:004.94]

O. V. GORBOVA^{1*}

^{1*}Research Department, Dnipropetrovsk National University of Railway Transport named after Academician V. Lazaryan, Lazaryan St., 2, Dnipropetrovsk, Ukraine, 49010, tel. +38 (056) 776 90 59, e-mail alexandra.gorbova@gmail.com, ORCID -0000-0002-5612-2715

MODELING WORK OF SORTING STATION USING UML

Purpose. The purpose of this paper is the construction of methods and models for the graphical representation process of sorting station, using the unified modeling language (UML). **Methodology.** Methods of graph theory, finite automata and the representation theory of queuing systems were used as the methods of investigation. A graphical representation of the process was implemented with using the Unified Modeling Language UML. The sorting station process representation is implemented as a state diagram and actions through a set of IBM Rational Rose. Graphs can show parallel operation of sorting station, the parallel existence and influence of objects process and the transition from one state to another. The IBM Rational Rose complex allows developing a diagram of work sequence of varying degrees of detailing. **Findings.** The study has developed a graphical representation method of the process of sorting station of different kind of complexity. All graphical representations are made using the UML. They are represented as a directed graph with the states. It is clear enough in the study of the subject area. Applying the methodology of the representation process, it allows becoming friendly with the work of any automation object very fast, and exploring the process during algorithms construction of sorting stations and other railway facilities. This model is implemented with using the Unified Modeling Language (UML) using a combination of IBM Rational Rose. **Originality.** The representation process of sorting station was developed by means of the Unified Modeling Language (UML) use. Methodology of representation process allows creating the directed graphs based on the order of execution of the works chain, objects and performers of these works. The UML allows visualizing, specifying, constructing and documenting, formalizing the representation process of sorting station and developing sequence diagrams of works of varying degrees of detail. **Practical value.** The usage of the Unified Modeling Language (UML) based on software package IBM Rational Rose and allows to create processes of varying degrees of detail, reduce the time expenditure for the process research of sorting station and get a clear graphical representation, as well as to reduce the human costs at the construction and improvement of existing technological processes.

Keywords: directed graph; sorting station; technological process; schedule of the station; parallel processes, UML

Introduction

Modern information technologies are one of the priority directions of the development and improvement of transportation process management, operation of infrastructure, and other processes on railway transport.

The main goal of informatization of railway transport is to provide all technological processes and activities of railway transport with the information and creation the information base for maximum efficiency of industry. The main element of information systems of operational control in the train stations operation and the assessment of their technical and technological characteristics is the mathematical model of the technological process. Methods that represent these mathematical models should provide a high level of detail that creates possibility of automatic information processing and decision making on the one hand, and to

be simple and intelligible for engineers who execute their development and modification on the other hand. In this regard, the formalization of technological processes of railway transport is an important task for the railway transport.

The railway stations are multi-channel, multi-phase, stochastic, dynamic, and ergatic queuing systems. Technical equipment and technology of their work are described with the technical and administrative act, technological process and various instructions and regulations. The total volume of these documents at major stations can be up to several thousand pages. Therefore, the formal representation of technological processes in the available form for their automatic and automated analysis is complicated enough.

The efficient way of representing the automation objects that provides highly informative and intuitive presentation of information is a visual

МОДЕЛЮВАННЯ ЗАДАЧ ТРАНСПОРТУ ТА ЕКОНОМІКИ

modeling. During the visual modeling each element of the production process is represented in the form of graphic symbols.

Graphical models have been already used for the formal image of technological processes of railway stations functioning since the initial stages of railway transport operation.

One of the first methods of formal representation of the technological processes used up to the present time is the linear Gantt chart [11], reflecting the duration of technological operations with the object, their relationship between themselves and the executors that take part in the operation. The line charts are the primary method of technological processes image with a separate objects in the development of technological documents [14]. The network graphs are widely used as models of technological processes of maintenance facilities at stations [14]. They allow applying the newly developed mathematical tools to determine the total duration of processing objects. The general shortcomings of linear Gantt charts and network diagrams are that they include a hard list of works and their execution order. In fact, the trains' technology service at the stations can differ and vary in operational conditions. Thus during the processing of transit trains there are various technology options depending on the need to change locomotives, cars availability, requiring cuts repair, health devices of railway automatics during the reception and departure and other. Considering that each particular combination of local conditions requires a different display in the form of a linear chart or network, such a description becomes quite cumbersome.

For fixation and subsequent analysis of work stations, as well as to establish their technical and operational indicators graphical model in the form of a daily schedule is used [6, 13, 12]. The separate operations are represented as an icon on the time grid in it. The daily schedule has high informativeness and it is a convenient tool for analysis of the technological process by the man, but it is actually a separate replica of the station work and it is impossible to set the rules of its functioning.

State machines [4] and Petri nets [13]. Give formal representation of the work stations technology with the possibility of considering various options for its execution. These models represent the processes in the form of discrete transitions from one state to another. However, these models are exclusively determined the procedure, and rules

execution of certain operations, the directions choice of transition necessitates the additional complexity of the model and development of specialized software [12].

Undoubtedly the technology of rail stations can be presented as an algorithm [15], but due to the complexity of the stations work these algorithms are very inconvenient and cumbersome to analyze.

Since the early 90-ies visual programming languages began to develop rapidly, providing the writing computer programs by manipulation of graphical objects instead of writing their text, and visual development tools that support them.

Today one of the most widely-distributed visual programming languages, which are used for formal description of business processes, is the unified modeling language (UML) [12]. The modeling language UML is an open standard that uses graphic symbols to create an abstract model of the system, the so-called UML models. UML was created for definition, visualization, design and documentation of software systems mainly. UML is used for software modeling, business processes, system design and display of organizational structures. IBM Company has developed the Rational Rose environment as visual development tools products in UML. It is a powerful tool for analysis and design of object-oriented software systems. The Rational Rose environment allows you to build a model of the technological process of the sorting station quickly and easily. It provides both an automatic data processing of computers and hand modeling. This environment contains all the components of the UML.

In this regard, the use of UML to formalize technological processes of train stations potentially creates conditions for improving the efficiency of the process and reduces the costs for developing the visual design tools.

Purpose

The aim of the article is to develop methods and models of graphical representation of technological processes of railway stations by means of the visual UML.

Methodology

In order to achieve the clear view of the technological process one should distinguish principal groups from which it consists of:

МОДЕЛЮВАННЯ ЗАДАЧ ТРАНСПОРТУ ТА ЕКОНОМІКИ

- the objects requiring action of the contractor (executor);
- the set of operations;
- the persons who perform the work.

Locomotives and trains are objects for the sorting stations. Every object on the station runs a certain number of jobs (operations), foreseeable by the process and the implementation of technological operations at the station provides the executors (shunting locomotives, sorting stations and other). Every technological operation should be made by the executors of a certain specialization (for example, inspection of cars carries out by a team of service point, train sorting – shunting locomotive and sorting station and other). At the same time the executor of a separate specialization can perform several different operations (for example, signal operator performs the fixing of rolling stock and cleaning brake shoes) [14, 16].

Two diagrams of states and actions can be used for the modeling the process of sorting station at the logical level in the UML system of IBM Rational Rose [10].

The state diagram describes the process of state changing (fulfilled work of technological process) only of one object. At this the changing of an object state (rolling stock, trains) can be caused by both internal processes and external agents. The main purpose of this diagram at formalization of the processes of train stations to describe all possible sequences and actions that collectively characterize an object's behavior during its dwell time on the station. The state diagram is essentially a graph of a special type, which represents a specific machine. The top of this graph are the works that are carried out at the railway station and some other types of machine elements that are shown with the corresponding graphical symbols for the environment. Arcs of the graph are used to indicate the transitions from state to state that characterizes the end of the execution of the work and the transition of corresponding signal to the following diagram performers. The state diagrams can be nested into each other [2].

The action diagram in UML has more features during the displaying of technological processes of railway stations. Diagram also is a graph that represents a specific machine, but it has differences, that includes:


- on the actions diagram it can be distinguished both states and actions, and actions, in turn, can be


represented in the form of a new diagram of state or actions, receiving the nesting of diagrams;


- action diagram has a set of tools for presentation of operator's «choice»;
- on the actions diagram the parallelism of the processes can be shown;
- on the action diagram is the ability to represent the synchronization of processes (operations).

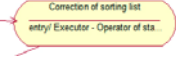
Let's present a graph of technological operations of processing trains delivered in to processing, in the presence of telegrams-consignor list (Fig. 1). Using the environment Rational Rose a graphical sequence of relevant works was constructed. They are executed during the train sorting, that had arrived at the sorting station. (Fig. 2).


For an actions diagram (Fig. 2) during its developing such designators were used:


-  – the initial diagram state, waiting for the signal to work. The diagram state that does not contain any internal action;

-  – the idle state of the transition signal to work;

-  – a simple transition is a relationship between two sequential operations, that indicates on the change of one another;

-  – the transition state;

-  – the final state of the diagram, waiting for the end of the work execution;

-  – the state of choice between two or more works.

For the transition in diagram, it is possible to fix the terms of transition and executants (group of executants), who carries out the work. With this purpose it is proposed a transitions signature in the following form [2]: «The condition for the transition (completed work)» («list of executors of the following works»)/ «Action for transition».

For the works of transition execution there is a list of fixed labels [1]

- entry – label that indicates on the operation or the incoming document required for the work execution that is performed at the time of entry;
- exit – label, pointing to the work, that is performed at the time of exit;
- do – label indicating the operation that is performed during the whole time while the relevant work is performed;

МОДЕЛЮВАННЯ ЗАДАЧ ТРАНСПОРТУ ТА ЕКОНОМІКИ

– event – label – «event» that indicates a single action and can be performed during the stay of the system in appropriate state.

Such «events» must be ordered in time action diagram is characterized by the reflection of the parallel actions of the objects involved in the process. For the process in parallel, there is a station duty officer, who receives and sends messages; there is a train going to the railway station and the railway station waiting for the arrival of the train for the

dissolution. A graphical representation is quite intelligible to understand the process, execution of works and objects at the railway station. On the action diagram it is also shown the status of the process and action separately. As in the state diagram, each state or activity can build its process separately. For the diagram (Fig. 2) executors of work – the station duty officer, the team of service point and other objects requiring action of the executor – station, train, set of work are operations of the technological process.

Operations name	Before the arrival of the train	After the arrival of the train					Executor
		Time in min.					
		0	5	10	15	20	
Receiving, marking and transferring the telegrams-consignor list to the shunting station operator, to the station and technology center, service point							Operator of station and technology center
The sorting list composition							Operator of station and technology center
Receiving the message about the number of a train and the time of its arrival from a neighboring							Station duty officer
Notification of station and technology center, service point and commercial inspection point workers about the time and route of the train's arrival							Station duty officer
Control check of the rolling stock in the input yard neck							Operator of station and technology center, teletypist
Arrival of a train, fixing of rolling stock, uncoupling and departure of train locomotive, the fencing of rolling stock							Signal operators, locomotive team, workers of service point
Delivery of shipping documents to the station and technology center							Operator of station and technology center
Check of telegrams-consignor list, marking and verification of shipping documents							Operator of station and technology center
Sorting list adjustment							Operator of station and technology center
Maintenance of the rolling stock, release the brakes							Workers of service point
Commercial inspection of rolling stock							Workers of commercial inspection point

Fig. 1. The schedule of operations of the trains processing, delivered to processing, in the presence of telegrams – consignor list

МОДЕЛЮВАННЯ ЗАДАЧ ТРАНСПОРТУ ТА ЕКОНОМІКИ

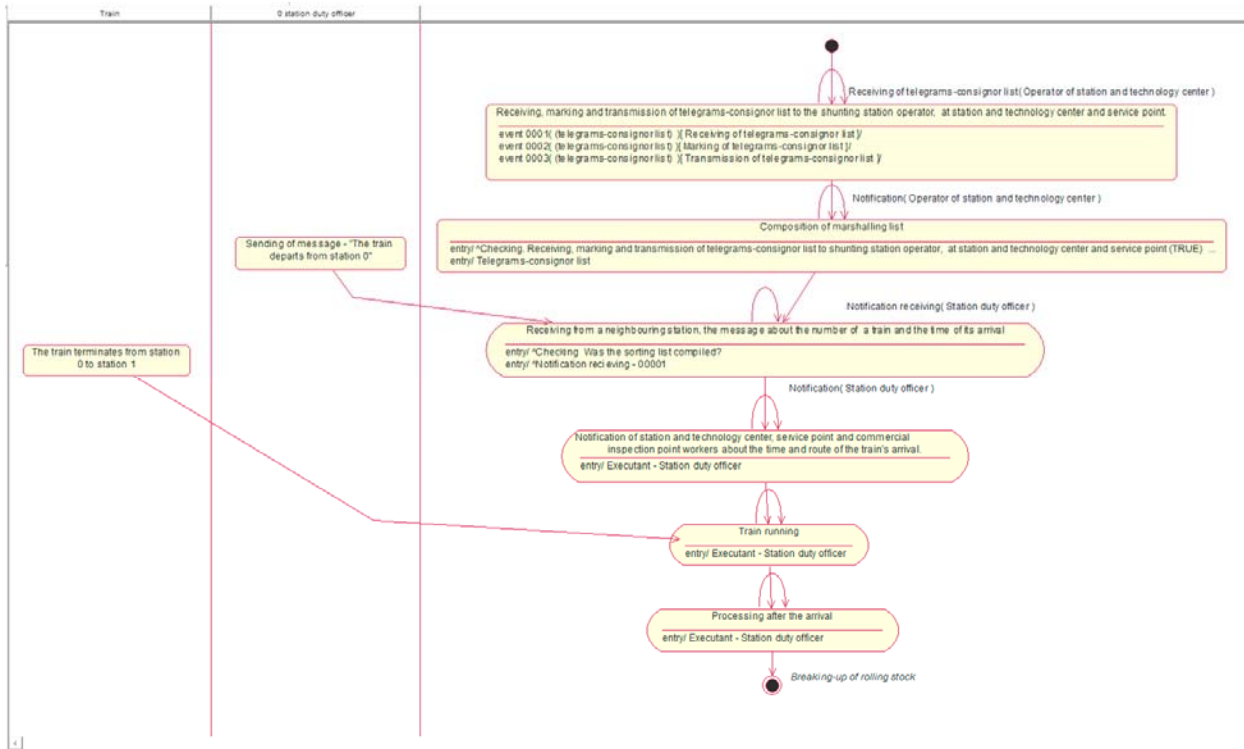


Fig. 2. The action diagram for the technological process of trains processing that does not contain any internal action

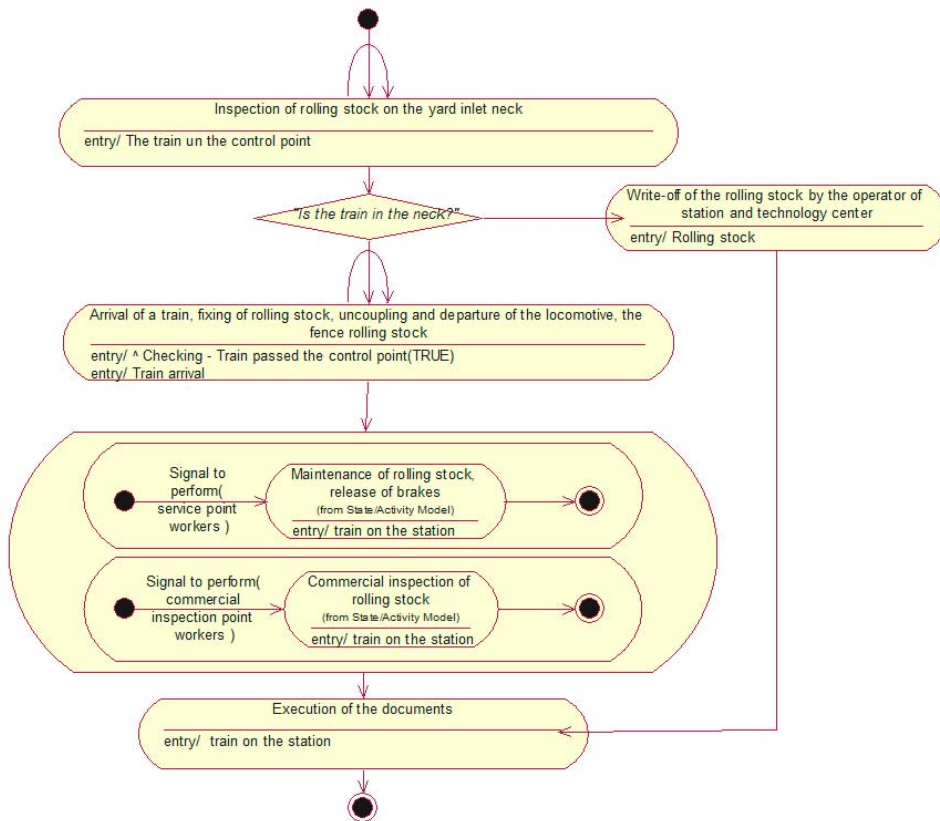


Fig. 3. The technological process view of arrival and inspection of trains on station

МОДЕЛЮВАННЯ ЗАДАЧ ТРАНСПОРТУ ТА ЕКОНОМІКИ

Therefore, the following diagram shows the train and in parallel its departure station and the process of repetition and arrival of the train to the next station. Arrival of a train at the station runs «The arrival and working of the train» process (Fig. 3).

Fig. 1. shows that for a given graph there are two parallel operations:

- the maintenance of rolling stock, release of brakes;
- commercial inspection of rolling stock.

Therefore, for such operations in view of the process in UML is provided the parallel displaying (Fig. 3). Each step is characterized by the executors and the condition of work completeness in state. For work that is in the parallel actions separate chart can be constructed. Their own works chart on the designation of their parallel processes or operations can be constructed too for each executor (duty officer of station and technology center, shunting locomotive, and team of service point). All parallel works should be completed. It is necessary for the diagram, the completion of train stay in state of parallel operations. It is the main condition for transition to the next operation in the diagram.

As it was described earlier, transition between states can contain the mark – «label». If the transition label does not contain any event, it means that the transition occurs as soon as any activities associated with this condition would be completed. For example, from the «arrival of a train, fixing of rolling stock, uncoupling and departure of train locomotive, the fencing of rolling stock» there are two possible transitions. The label of one of them includes the condition that «The train has passed the control point». A conditional transition is executed only if the condition evaluates to «true», i.e. if the duty officer has reported on the received information and willingness to handle it, then the transition to the next state occurs. Otherwise the station duty officer waits for a notification.

At the given moment from the particular state only one transition can be made; thus, conditions help to avoid the dual result for any event. There are two special states: input and output. Any action related to the input event occurs when the object enters the state. The output event occurs when the object goes out of this state.

In the mode of train behavior in the system one can identify actions that are reflected by transitions, and actions that reflected by states. Although both

processes that are implemented, as a rule, by some «executors» of technical process, they are treated in different ways. Operations are associated with transitions and treated as an instantaneous and continual one. Works are related with conditions and can last long enough. The work can be interrupted as a result of occurrence of some external event.

The representation of the process is quite easier to understand and reduces the time needed to study the process of the sorting station, because it has the opportunity to present the process from general to detailed. After the receiving the schematic display of the technological process in the environment of IBM Rational Rose user receives a text file with a description of the constructed process. The file can be applied in the analysis process and receiving calculations of indicators of processes stations formalization.

Findings

The methodology for the presentation of technological processes of sorting stations in the form of a sequential execution of the operations and the transitions between them, as well as representation the parallel operations and parallel action of object sorting station in these diagrams were proposed for the model development. All graphical representations are performed using standardized UML and they are represented as a directed graph with the states that is enough to understand the subject area. Applying the method of technological processes presentation, it is possible to learn the operation of any automation object very quickly. It is also possible to study their work during the construction of general work algorithms in detail with regard of sorting stations and other objects of railway transport.

The proposed model representation of the process of the sorting stations using standardized UML and the editor IBM Rational Rose allows saving graphic information in a text file. Using other software tools one can automate the file parsing of the process and calculate the efficient indicators of the process formation.

Originality and practical value

In result of the research the method of mathematical models constructing of technological process of the sorting station was proposed.

This technique involves the use of unified design language UML that essentially allows reduc-

МОДЕЛЮВАННЯ ЗАДАЧ ТРАНСПОРТУ ТА ЕКОНОМІКИ

ing the time to construct the model and to present the process of sorting station; to specify, construct, document, formalize the process, to develop a sequence diagram for different levels of detailing.

Conclusions

1. The use of the methods of graph theory and method of object-oriented analysis during the development allows realizing the graphical representation of the technological process by the proposed method. With the help of actions diagram, the work process, contractors of work, as well as conditions and transitions between the operations in the process can be reflected. It is a quite convenient representation of the graph of the work process execution at the sorting station.

2. The use of unified design language UML for plotting actions, for displaying the processes of formalization technology works of sorting stations allows reducing the cost of technological processes development and increasing the work efficiency of the automated systems designers for railway transport objects.

LIST OF REFERENCE LINKS

- Вернигора, Р. В. Підготовка ДСП станцій ділянки з використанням тренажерного комплексу / Р. В. Вернигора, В. В. Малашкін // Транспорт. системи та технології перевезень. – 2010. – Вип. 1. – С. 34–37.
- Диаграмма состояний [Electronic resource]. – Available at: <http://itteach.ru/rational-rose/diagrammi-sostoyaniy>. – Title from the screen. – Accessed : 08.10.2014.
- История диаграммы Ганта [Electronic resource]. – Available at: http://gibtech.ru/blog/discus?entry_id=177. – Title from the screen. – Accessed : 08.10.2014.
- Карпов, Ю. Г. Теория автоматов / Ю. Г. Карпов. – Санкт-Петербург : Питер, 2003. – 208 с.
- Козаченко, Д. Н. Математическая модель для оценки технико-технологических показателей работы железнодорожных станций / Д. Н. Козаченко // Наука та прогрес трансп. Вісн. Дніпропетр. нац. ун-ту залізн. трансп. – 2013. – № 3 (45). – С. 22–28.
- Козаченко, Д. Н. Объектно-ориентированная модель функционирования железнодорожных станций / Д. М. Козаченко // Наука та прогрес трансп. Вісн. Дніпропетр. нац. ун-ту залізн. трансп. – 2013. – № 4 (46). – С. 47–55.
- Козаченко, Д. Н. Программний комплекс для імітаційного моделювання роботи залізничних станцій на основі добового плану - графіку / Д. М. Козаченко, Р. В. Вернигора, Р. Г. Коробойова // Залізн. трансп. України. – 2008. – № 4 (70). – С. 18–20.
- Конспект лекцій «Технологія і управління роботою станцій та вузлів» [Electronic resource]. – Available at: <http://ua-referat.com>. – Title from the screen. – Accessed : 08.10.2014.
- Котов, В. Е. Сети Петри / В. Е. Котов. – Москва : Наука, 1984. – 160 с.
- Леоненков, А. В. Самоучитель UML / А. В. Леоненков. – Санкт-Петербург : БХВ-Петербург, 2002. – С. 183–196.
- Лустина, Е. Небольшой рассказ о Генри Ганте [Electronic resource] / Е. Лустина. – Available at: <http://www.mental-skills.ru/synopses/524.html>. – Title from the screen. – Accessed : 08.10.2014.
- Сетевые графики в планировании / И. М. Разумов, Л. Д. Белова, М. И. Ипатов, А. В. Прокураков. – Москва : Высш. шк., 1967. – 170 с.
- Смородинцева, Е. Е. Организация работы сортировочной станции / Е. Е. Смородинцева, Е. М. Тимухина. – Екатеринбург : УрГУПС, 2010. – 70 с.
- Технологічний процес роботи Одеської залізниці. Державна адміністрація залізничного транспорту України. – Одеса : Держ. адм. залізн. трансп. України, 2009. – 168 с.
- ЦД-0082. Практичні рекомендації щодо складання технологічного процесу роботи сортувальної станції. – Київ : ДЕДУТ, 2009. – 84 с.
- A graph grammar-based formal validation of object-process diagrams Software and Systems Modeling [Electronic resource]. – 2012. – № 11 (2). – P. 287–302. – Available at: <http://www.scopus.com/inward/record.url?eid=2-s2.0-84860480881&partnerID=40&md5=e5455760c5351950d7411631552e6daf>. – Title from the screen. – Accessed : 08.10.2014.
- Ma, L. Design of wagon-flow simulation system of railway marshalling yard based on J2EE Xitong Fangzhen Xuebao [Electronic resource] / L. Ma, J. Guo, G.-W. Chen // J. of System Simulation. – 2013. – № 25 (5). – P. 1083–1089. – Available at: <http://www.scopus.com/inward/record.url?eid=2-s2.0-84878478072&partnerID=40&md5=684049107fe03bc4af534334f33c03e4>. – Title from the screen. – Accessed : 08.10.2014.
- Yang, N.-H. Modeling UML state diagrams based on extended ITCPN Huadong Ligong Daxue Xuebao [Electronic resource] / N.-H. Yang, H.-Q. Yu, M. Lu / J. of East China University of Science and Technology. – 2011. – № 37 (6). – P. 765–769. – Available at: <http://www.scopus.com/inward/record.url?eid=2-s2.0-84856354155&partnerID=40&md5=87d8d9f4b6cab4498f04799eba638baf>. – Title from the screen. – Accessed : 08.10.2014.

О. В. ГОРБОВА^{1*}

^{1*}Науково-дослідна частина, Дніпропетровський національний університет залізничного транспорту імені академіка В.Лазаряна, вул. Лазаряна, 2, Дніпропетровськ, Україна, 49010, тел. +38 (056) 776 90 59, ел. пошта alexandra.gorbova@gmail.com, ORCID -0000-0002-5612-2715

МОДЕЛЮВАННЯ РОБОТИ СОРТУВАЛЬНОЇ СТАНЦІЇ ЗА ДОПОМОГОЮ МОВИ UML

Мета. Дослідження спрямоване на побудову методів та моделей графічного представлення технологічного процесу сортувальної станції за допомогою уніфікованої мови моделювання (UML). **Методика.** В якості методів дослідження використовувались методи теорії графів, скінченних автоматів та теорії представлення систем масового обслуговування. Графічне представлення технологічного процесу реалізовано за допомогою уніфікованої мови моделювання UML. Представлення технологічного процесу сортувальної станції реалізовано у вигляді діаграми станів та дій за допомогою комплексу IBM Rational Rose. Діаграми мають можливість показати паралельність робіт сортувальної станції, паралельність існування та впливу об'єктів технологічного процесу та перехід від одного стану в інший. Комплекс IBM Rational Rose дозволяє розробляти діаграми послідовності робіт різного ступеня деталізації. **Результати.** У результаті дослідження розроблено метод графічного представлення технологічного процесу сортувальних станцій різного виду складності. Всі графічні представлення виконуються за допомогою уніфікованої мови UML, представляються у вигляді орієнтованого графу зі станом, що є досить зрозумілим при вивченні предметної області. Застосовуючи методику представлення технологічних процесів, можна швидко ознайомитись із роботою будь-якого об'єкта автоматизації. Можливо також вивчити їх роботи при побудові алгоритмів від загальних робіт до детальних, що стосується, в тому числі, і сортувальних станцій та інших об'єктів залізничного транспорту. Дану модель реалізовано за допомогою уніфікованої мови моделювання (UML) з використанням комплексу IBM Rational Rose. **Наукова новизна.** За рахунок використання уніфікованої мови моделювання (UML) розроблено представлення технологічного процесу сортувальної станції. Розроблена методологія представлення технологічного процесу, що дозволяє створювати орієнтовані графи на основі виконання ланцюжка робіт, об'єктів та виконавців цих робіт. Мова UML дозволяє візуалізувати, специфікувати, конструювати та документувати, формалізувати представлення технологічного процесу сортувальної станції та розробляти діаграми послідовності робіт різного ступеня деталізації. **Практична значимість.** Використання уніфікованої мови моделювання (UML) на основі програмного комплексу IBM Rational Rose дозволяє: створювати технологічні процеси різного ступеня деталізації; скоротити витрати часу на вивчення технологічного процесу сортувальної станції та отримати наглядне графічне його представлення; зменшити людські витрати при побудові та удосконаленні, існуючих технологічних процесів.

Ключові слова: орієнтований граф; сортувальна станція; технологічний процес; план-графік роботи станції; паралельні процеси; UML

А. В. ГОРБОВА^{1*}

^{1*}Научно-исследовательская часть, Днепропетровский национальный университет железнодорожного транспорта имени академика В. Лазаряна, ул. Лазаряна, 2, Днепропетровск, Украина, 49010, тел. +38 (056) 776 90 59, эл. почта alexandra.gorbova@gmail.com, ORCID -0000-0002-5612-2715

МОДЕЛИРОВАНИЕ РАБОТЫ СОРТИРОВОЧНОЙ СТАНЦИИ С ПОМОЩЬЮ ГРАФИЧЕСКИХ ПРЕДСТАВЛЕНИЙ

Цель. Исследование направлено на построение методов и моделей графического представления технологического процесса сортировочной станции с помощью унифицированного языка моделирования (UML). **Методика.** В качестве методов исследования использовались методы теории графов, конечных автоматов и теории представления систем массового обслуживания. Графическое представление технологического процесса реализовано с помощью унифицированного языка моделирования UML. Представление технологического процесса сортировочной станции реализовано в виде диаграммы состояний и действий с помощью комплекса IBM Rational Rose. Диаграммы могут показать параллельность работ сортировочной станции, парал-

МОДЕЛЮВАННЯ ЗАДАЧ ТРАНСПОРТУ ТА ЕКОНОМІКИ

тельность существования и влияния объектов технологического процесса и переход от одного состояния в другое. Комплекс IBM Rational Rose позволяет разрабатывать диаграммы последовательности работ различной степени детализации. **Результаты.** В результате исследования разработан метод графического представления технологического процесса сортировочных станций различного вида сложности. Все графические представления выполняются с помощью унифицированного языка UML, представляются в виде ориентированного графа с состоянием, достаточно понятным при изучении предметной области. Применяя методику представления технологических процессов, можно быстро ознакомиться с работой любого объекта автоматизации, а также изучить технологический процесс при построении алгоритмов сортировочных станций и других объектов железнодорожного транспорта. Данная модель реализована с помощью унифицированного языка моделирования (UML) с использованием комплекса IBM Rational Rose. **Научная новизна.** С учетом использования унифицированного языка моделирования (UML) разработано представление технологического процесса сортировочной станции. Методология представления технологического процесса позволяет создавать ориентированные графы на основе порядка выполнения цепочки работ, объектов и исполнителей этих работ. Язык UML позволяет визуализировать, специфицировать, конструировать и документировать, формализовать представление технологического процесса сортировочной станции и разрабатывать диаграммы последовательности работ различной степени детализации. **Практическая значимость.** Использование унифицированного языка моделирования (UML) на основе программного комплекса IBM Rational Rose позволяет: создавать технологические процессы различной степени детализации; сократить затраты времени на изучение технологического процесса сортировочной станции и получить наглядное графическое представление; уменьшить человеческие затраты при построении и совершенствовании существующих технологических процессов.

Ключевые слова: ориентированный граф; сортировочная станция; технологический процесс; план-график работы станции; параллельные процессы; UML

REFERENCES

1. Vernyhora R.V., Malashkin V.V. Pidhotovka DSP stantsii dilyanky z vykorystanniam trenazhernoho kompleksu [The station duty officer preparation of a section with using the training complex]. *Transportni systemy ta tekhnologii perevezhen – The Transport System and Transport Technology*, 2010, issue 1, 34-37 p.
2. *Diagramma sostoyaniy* [State diagram]. Available at: <http://itteach.ru/rational-rose/diagrammi-sostoyaniy> (Accessed 8 October 2014).
3. *Istoriya diagrammy Ganta* [The history of the Gantt chart]. Available at: http://gibtech.ru/blog/discus?entry_id=177 (Accessed 8 October 2014).
4. Karpov Yu.H. *Teoriya avtomatov* [Theory of machines]. Saint-Petersburg, Piter Publ., 2003. 208 p.
5. Kozachenko D.N. Matematicheskaya model dlya otsenki tekhniko-tekhnologicheskikh pokazateley roboty zheleznodorozhnykh stantsiy [A mathematical model for assessing the technical performance of rail stations]. *Nauka ta prohres transportu. Visnyk Dnipropetrovskoho natsionalnoho universytetu zaliznychnoho transportu – Science and Transport Progress. Bulletin of Dnipropetrovsk National University of Railway Transport*, 2013, no. 3 (45), pp. 22-28.
6. Kozachenko D.N. Obektno-oriyentirovannaya model funktsionirovaniya zheleznodorozhnykh stantsiy [The object-oriented model of the functioning of railway stations]. *Nauka ta prohres transportu. Visnyk Dnipropetrovskoho natsionalnoho universytetu zaliznychnoho transportu – Science and Transport Progress. Bulletin of Dnipropetrovsk National University of Railway Transport*, 2013, no. 4 (46), pp. 47-55.
7. Kozachenko D.M., Vernyhora R.V., Korobiova R.H. Prohramnyi kompleks dlia imitatsiinoho modeliuвання roboty zaliznychnykh stantsii na osnovi dobovoho planu – hrafiku [Software package for simulation of rail stations on the basis of the daily schedule]. *Zaliznychnyi transport Ukrainy – Railway transport of Ukraine*, 2008, no. 4 (70), pp.18-20.
8. *Konspekt lektsii «Tekhnolohiia i upravlinnia robotoiu stantsii ta vuzliv»* [Lecture notes «Technology and management work of stations and sites»]. Available at: <http://ua-referat.com> (Accessed 8 October 2014).
9. Kotov V.Ye. *Seti Petri* [Petri nets]. Moscow, Nauka Publ., 1984. 160 p.
10. Leonenkov A.V. *Samouchitel UML* [The UML tutorial]. Saint-Petersburg, BKhV-Peterburg Publ., 2002, pp. 183-196.
11. Lustina Ye. *Nebolshoy rasskaz o Genri Gante* [A short story about Henry Gantt]. Available at: <http://www.mental-skills.ru/synopses/524.html> (Accessed 8 October 2014).
12. Razumov I.M., Belova L.D., Ipatov M.I., Proskuryakov A.V. *Setevyye grafiki v planirovanii* [Network graphs in planning]. Moscow, 1967. 170 p.

МОДЕЛЮВАННЯ ЗАДАЧ ТРАНСПОРТУ ТА ЕКОНОМІКИ

13. Smorodintseva Ye.Ye. Timukhina Ye.M. *Organizatsiya raboty sortirovochnoy stantsii* [The organization works of sorting station]. Ekaterinburg, UrGUPS Publ., 2010. 70 p.
14. *Tekhnolohichniy protses roboty odeskoi zaliznytsi. Derzhavna administratsiia zaliznychnoho transportu Ukrainy* [The technological process of the Odessa railway. State administration of railway transport of Ukraine]. Odessa, Derzhavna administratsiia zaliznychnoho transportu Ukrainy Publ., 2009. 168 p.
15. *TsD-0082. Praktychni rekomendatsii shchodo skladannia tekhnolohichnoho protsesu roboty sortuvalnoi stantsii. Praktychni rekomendatsii* [CD-0082-Practical guidelines for the process of sorting station. Practical recommendations]. Kyiv, DETUT Publ., 2009. 84 p.
16. A graph grammar-based formal validation of object-process diagrams. *Software and Systems Modeling*, 2012, № 11 (2), 287–302 p. Available at: <http://www.scopus.com/inward/record.url?eid=2-s2.0-84860480881&partnerID=40&md5=e5455760c5351950d7411631552e6daf> (Accessed 8 October 2014). doi: 10.1007/s10270–011–0201–4.
17. Ma L., Guo J., Chen G.-W. Design of wagon-flow simulation system of railway marshalling yard based on J2EE Xitong Fangzhen Xuebao. *Journal of System Simulation*, 2013, no. 25 (5), pp. 1083-1089. Available at: <http://www.scopus.com/inward/record.url?eid=2-s2.0-84878478072&partnerID=40&md5=684049107fe03bc4af534334f33c03e4> (Accessed 8 October 2014).
18. Yang N.-H., Yu H.-Q., Lu M. Modeling UML state diagrams based on extended ITCPN Huadong Ligong Daxue Xuebao. *Journal of East China University of Science and Technology*, 2011, no. 37 (6), pp. 765–769. Available at: <http://www.scopus.com/inward/record.url?eid=2-s2.0-84856354155&partnerID=40&md5=87d8d9f4b6cab4498f04799eba638baf> (Accessed 8 October 2014).

Prof. D. N. Kozachenko, D. Sci. (Tech.); Prof. O. M. Ogar, D. Sci. (Tech.) recommended this article to be published

Received: Oct. 9, 2014

Accepted: Dec. 10, 2014